

**6 biking days tour, 152km, +5050m/-5500m**

# Mountain biking in Bran Country

Bran Country, the land around the famous Bran Castle, guarded by the impressive Carpathian mountains, has always drawn to Romania tourists from all over the world. Hikers, trekkers, serious backpackers or regular tourists, they are all enjoying the great views, the clean air, the gorgeous food.

The area is also a mountain biking heaven, with trails and tracks across idyllic meadows, majestic forests, with cart roads leading to mountain villages where the time stood still.

Our six days moderate cross-country and all-mountain program offers a well balanced route, intensive trail riding alternating with more forgiving cart and forestry roads. It's the best choice for people looking for a mountain biking experience that would leave enough time and energy to enjoy the

scenery and the quiet, slow-paced rural life. The routes are accessible from May to late October.

A light full suspension mountain bike would be perfect, but a hard-tail can suit the needs for this tour just fine. The program on each day is designed to be "bike-in bike-out". We leave one accommodation on bike and we get to the (next) accommodation also on bike. No time lost on endless mini-bus transfers.

**medium level tour**





## MOUNTAIN BIKING IN BRAN COUNTRY 6 biking days tour, 152km, +5050m/-5500m

### Day 1: ARRIVAL

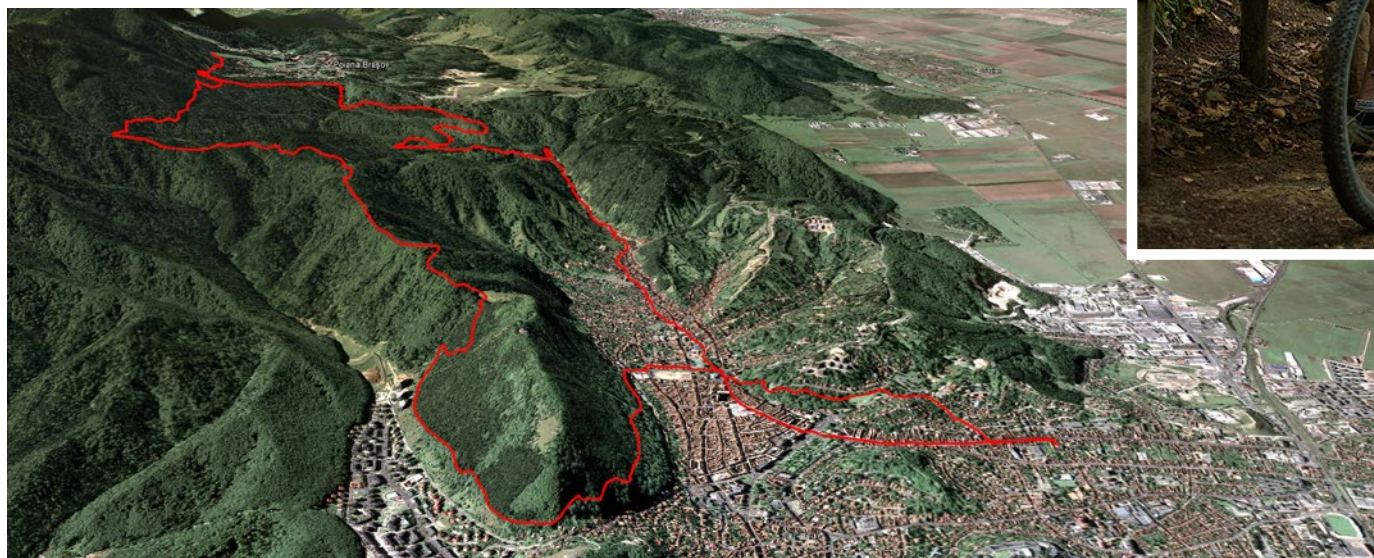
Arrival at the airport, transportation to Brasov, the main city in Bran County. Assembling of bikes, meet the guide, short warm-up ride in the area, presentation of the next-days programme. Accommodation in double rooms at a 3\* hotel in Brasov, close to the city center.

*Included services: transfer from airport to Brasov, dinner, accommodation.*

### Day 2: POSTAVARU MOUNTAIN ROUND TOUR

The first day we make a round tour in the vicinity of Brasov, up to Poiana Braşov mountain resort on a forestry road and down to the city on a thrilling forest single trail. 26 km, +800/-800m. Accommodation, breakfast and dinner at the same hotel in Brasov.

*Included services: breakfast, sandwiches for lunch, dinner, accommodation.*



### highlights:

- » biking through Brasov old city center
- » the singletrack down the mountain from Poiana Braşov to Brasov



## MOUNTAIN BIKING IN BRAN COUNTRY 6 biking days tour, 152km, +5050m/-5500m



### highlights:

- » panoramic views over Postavaru and Bucegi mountains
- » single trails in Postavaru forests and meadows
- » the spectacular rocky walls of Rasnoavei gorges



### Day 3:

#### POIANA BRASOV TO POIANA SECUIOR

We leave the hotel in the morning on bikes and climb towards Poiana Braşov on a forestry road, then we move to a nice single trail through an old oak and beech forest. We visit the Rasnoavei gorges before the final climb of the day, up to Poiana Secuilor mountain hut - accommodation in double rooms or bigger rooms for large groups of bikers. +1100/-950m, 21 km.

*Included services: breakfast, sandwiches for lunch, dinner, accommodation, transfer of main luggage to the new accommodation.*



## MOUNTAIN BIKING IN BRAN COUNTRY 6 biking days tour, 152km, +5050m/-5500m

### Day 4: POIANA SECUIOR TO POARTA

Singletrails in the forests around Fetioiu ridge in the first part of the day, after leaving Poiana Secuilor mountain hut towards the foothills of Bucegi Mountain. The second half of the day brings us closer to Bran Castle by crossing quiet forests and meadows on the hills and glens of Bran County. Accommodation in a local pension in the village of Poarta, near Bran Castle. 30km, +800/-1100m.

*Included services: breakfast, sandwiches for lunch, dinner, accommodation, transfer of main luggage.*



### highlights:

- » panoramic views over Postavaru and Bucegi Mountains
- » singletracks in the forests near Parau Rece
- » the landscapes of Bran County around Sohodol and Poarta villages
- » the traditional food at the accommodation



## MOUNTAIN BIKING IN BRAN COUNTRY 6 biking days tour, 152km, +5050m/-5500m



### highlights:

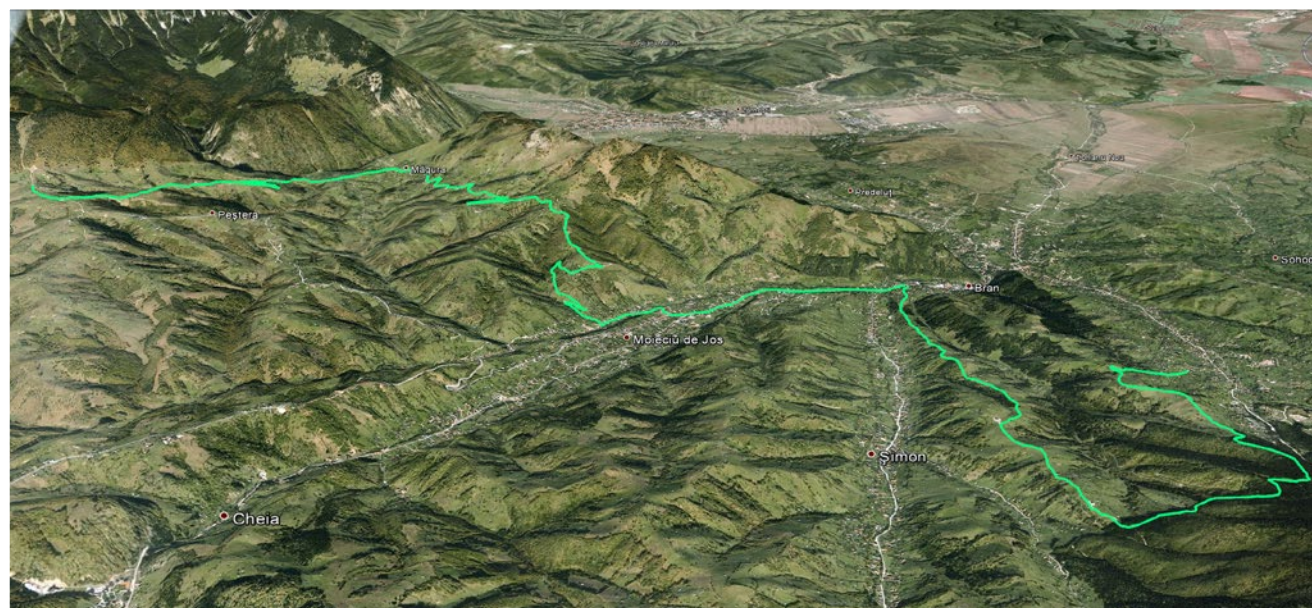
- » panoramic views over Bucegi, Piatra Craiului Mountains, over the Bran County
- » the singletrail on Balaban ridge
- » the traditional rural lifestyle at the Casa Folea mountain hut

### Day 5:

#### POARTA VILLAGE TO CASA FOLEA

Another day on the hills and glens of Bran County. Balaban Ridge near the village of Poarta offers both great views and flowing singletrails. Climbing towards Magura and Pesteră villages we pass along isolated households with grazing cows and sheep, with traditional haymaking underway along the flowery fields. The countryside at its best. Accommodation in an old mountain hut, at the foothills of Piatra Craiului. 24km, +850/-650m.

*Included services: breakfast, sandwiches for lunch, dinner, accommodation, transfer of main luggage.*



## medium level tour



## MOUNTAIN BIKING IN BRAN COUNTRY 6 biking days tour, 152km, +5050m/-5500m

### Day 6:

#### PIATRA CRAIULUI ROUND TOUR

Rather short (18 kilometres), but high density round tour today in the Piatra Craiului National Park. We change the scenery quite dramatically, moving from the round shapes of the hills in Bran County to the rough rocky walls of the Zarnesti Gorges, and then to the mild meadows just beneath Piatra Craiului Mountain main ridge. A testing route, both physically and technically - good opportunity to test one's abilities. Accommodation at the same mountain hut. +900/-900m.

*Included services: the breakfast, sandwiches for lunch, dinner, accommodation.*



### highlights:

- » panoramic views over Piatra Craiului, Bucegi, over the Bran County
- » narrow singletrail along old wooden fences in the village of Magura
- » the traditional rural lifestyle at the Casa Folea mountain hut



## MOUNTAIN BIKING IN BRAN COUNTRY 6 biking days tour, 152km, +5050m/-5500m

### highlights:

- » the descent to Moeciu de Jos village
- » the scenic Simon ridge
- » the final singletrack descent to Poarta village



### Day 7:

#### CASA FOLEA TO POARTA VILLAGE

We are going back to the village of Poarta on an alternative route. Long and delicious descent to the main valley at Moeciu de Jos, than long cart road and singletrack ascent on the Simon ridge, with great views around the Bran County. Technical descent in the village of Simon and then final climb of the tour, up to Balaban ridge. The final singletrail descent to the pension in Poarta village ends the day and the tour on a high. Accommodation in the village of Poarta, at the same pension as in day 4. Distance 33km, +900/-1100.

*Included services: breakfast, sandwiches as lunch, dinner, accommodation, transfer of main luggage.*

### Day 8:

#### DEPARTURE

Preparations for the departure (pack the bikes, etc). If the schedule allows it, a visit to Bran Castle on the way to the airport can be included.

*Included services: breakfast, sandwiches for lunch, tickets for the visit at Bran Castle, transfer to the airport.*



## MOUNTAIN BIKING IN BRAN COUNTRY 6 biking days tour, 152km, +5050m/-5500m

### Final notes

The Mountain biking in Bran's County tour is organized by Iulian Cozma Outdoor Adventures, licensed tour operator, owned by Iulian Cozma, RMGA mountain guide (mountainguide.ro).

Iulian Cozma has been organizing mountain activities tours in Romania since late 1990's. You can read testimonials wrote by some of the people he guided through Romania here: <http://www.mountainguide.ro/testimonials-hiking-ski-touring-romania/>

This route is designed by Horia Marusca (RMGA mountain guide), who's been exploring the Romanian mountains on bike since early 2000. His biking activity is documented here: <http://www.mtbtours.ro/?lang=en>

The accommodation is chosen carefully, in order to provide a comfortable stay and a nice meal before or after a day facing the elements. Our aim is also to sustain the local economy, the family-run pensions and mountain huts. Most of the accommodation is in double bed rooms with private bathrooms, bunk beds dormitories with share bathrooms are usual higher up in the mountains.

All breakfasts and dinners are served within the accommodation premises. The meals are prepared as much as possible using the local produce. There isn't much of a Romanian cuisine, but there are a lot of local dishes that you'd rather eat here than in some "traditional Romanian" restaurants in the big cities. Here is where they belong, here is where they taste the best.



During the tour, alcoholic drinks are not included - but available at local bars or neighborhood shops. We don't drink alcohol during the day and we ask our guest not to drink either. We'll happily share a glass at the end of each day. On most of the days the routes pass by mountain huts or village markets where drinks, sweets, fruits can be purchased.

The main luggage will be transported from one accommodation to another by car, using the main roads. Each participant is kindly asked to make his luggage as compact as possible. After unpacking, the mountain bike boxes used on the plane will be

deposited in Brasov till the last day of the tour, when they will be made available for the final packing.

During the six days of mountain biking each participant will carry his own extra-clothes, hydrating system, repairing kit, his lunch pack (received each morning after the breakfast), his own energy bars and gels, photo and video cameras, etc.

The mountains are simply gorgeous, the trails inspiring - the experience, one of a kind. We are happy to welcome you to Romania. Feel free to contact us if you have any questions.

**medium level tour**